

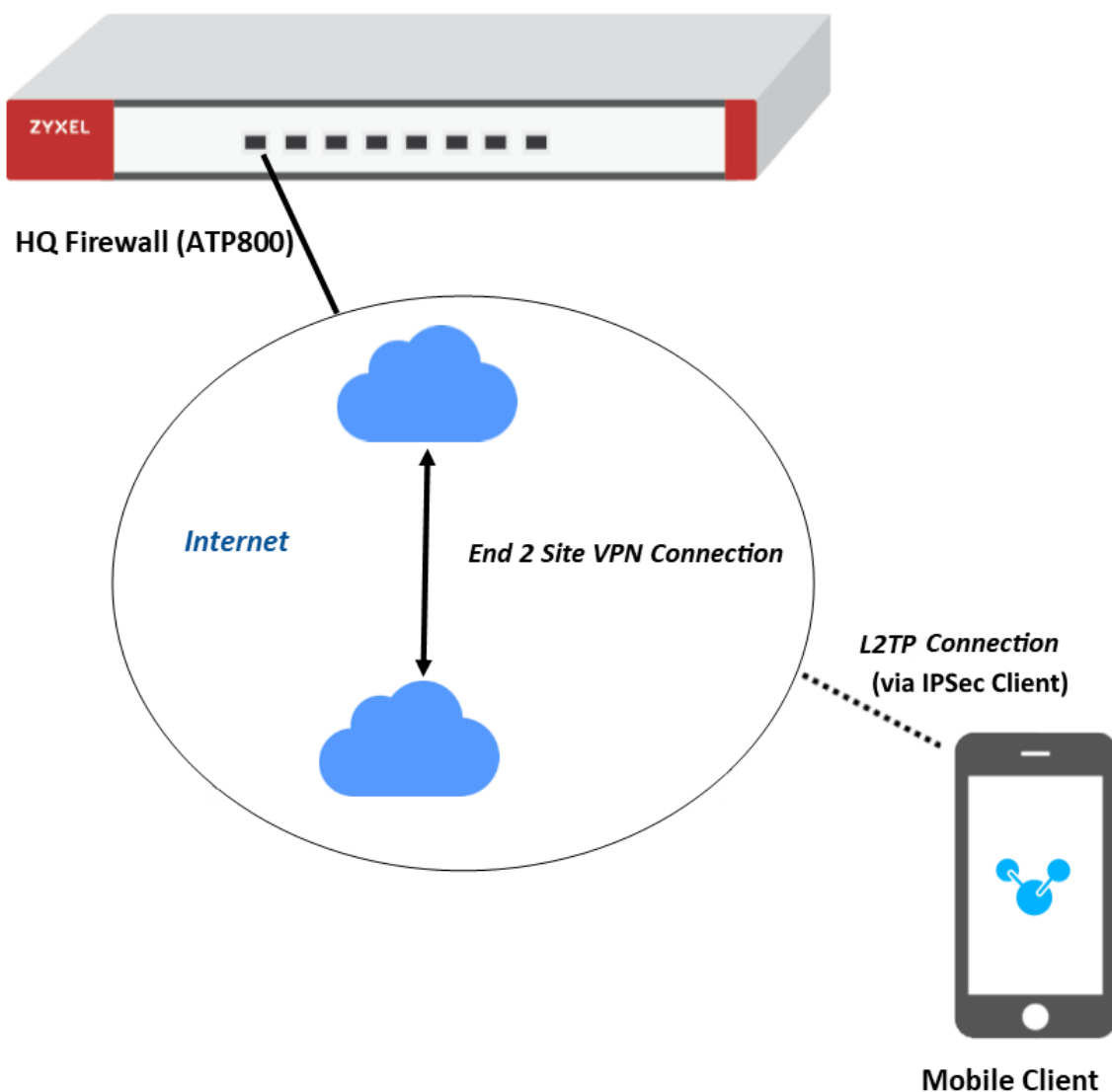
Virtual Lab - End-to-Site VPN (L2TP)

 support.zyxel.eu/hc/en-us/articles/360008700039

This is a small lab, demonstrating directly on devices, how to configure an End-to-Site L2TP VPN to connect securely to your ZyXel devices.

Find in these articles useful information about End-to-Site VPN and L2TP:

- [L2TP-configuration on a USG-Firewall using the Windows built-in client](#)
- [How to configure L2TP behind NAT](#)
- [How to use the VPN Setup Wizard to create an L2TP VPN on the ZyWALL/USG](#)



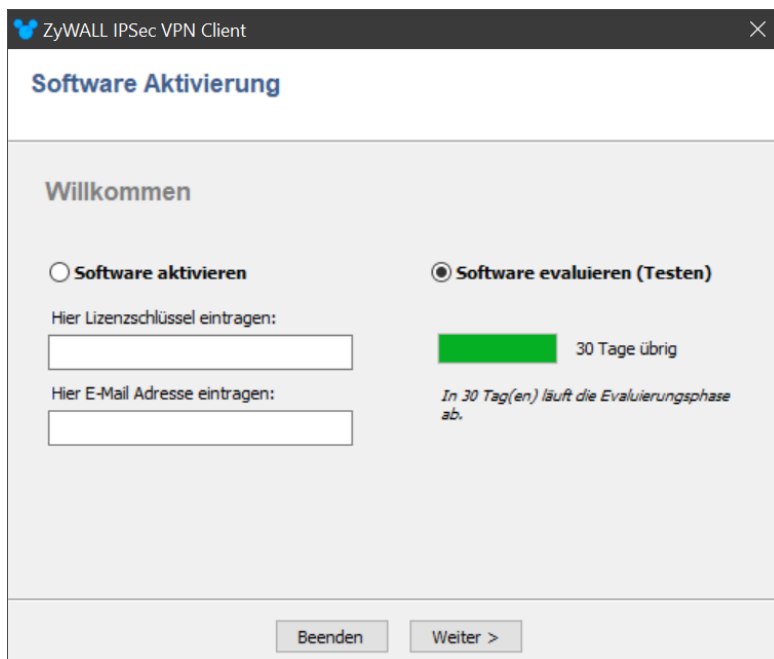
Find here the login and access data:

<i>Devices</i>	<i>Username</i>	<i>Password</i>
<u>ATP800</u>	demo	demouser

Testing the VPN connection by yourself!

If you want to test the function of the VPN with our IPSec Client follow the next steps.

- download the software here - [IPSec Client](#) (direct download)
- Install the software and open it
- If you have no license, select the 30 days free demo



To get known how to configure the VPN Client, please read this article:

[VPN Client-To-Site Setup on USG/ZyWall Devices](#)

Use the following access data to log in:

Server: zylab.zyxel.eu

Username: demo

Password: demouser

Have a look here to these related articles to get some more information:

- [L2TP/IPSec VPN Connection Issue - Things to consider](#)
- [Nebula - L2TP VPN with Authentication Server \(RADIUS/AD\)](#)
- [How to let L2TP clients surf via USG](#)
- [L2TP Over IPSEC VPN - Split Tunneling](#)

